

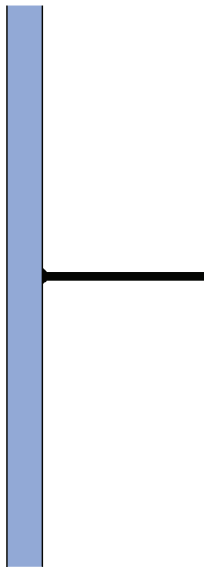
HANDLING AND STORAGE

Store undercover, and in dry conditions. Handle with care, especially on the edges and corners, which can be damaged if subject to sharp impact. Do not apply excessive pressure, for example by standing or sitting on the product, as permanent damage may be caused.

ENERGYLITE INSTALLATION METHODOLOGY

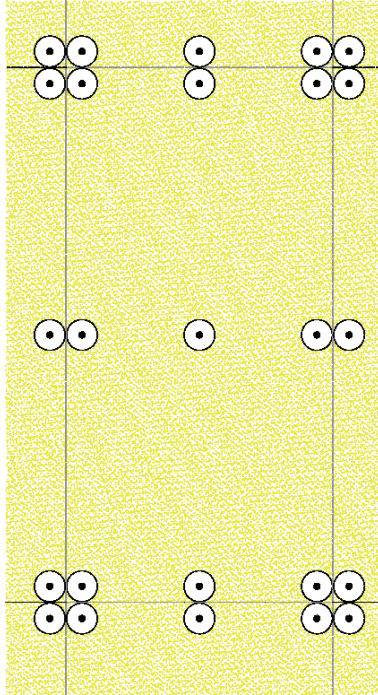
Tools

Sharp Knife



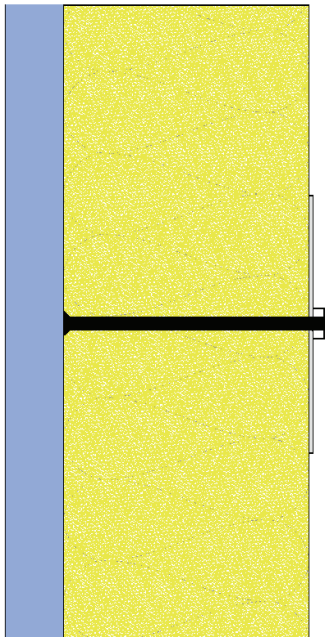
1

- Fix the metal pins onto the surface.



2

- Install 3 lines of proprietary fixings at maximum 600mm centres with 2 lines at 45mm from the edge of the batt and 1 line in the centre of the batt.



3

- Impale Energylite batt over the pins with the longer side vertical.
- Secure Energylite using proprietary washers or studs and nuts.