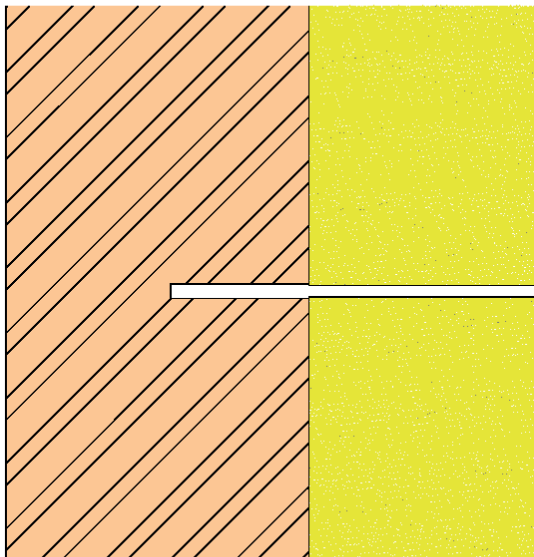


HANDLING AND STORAGE

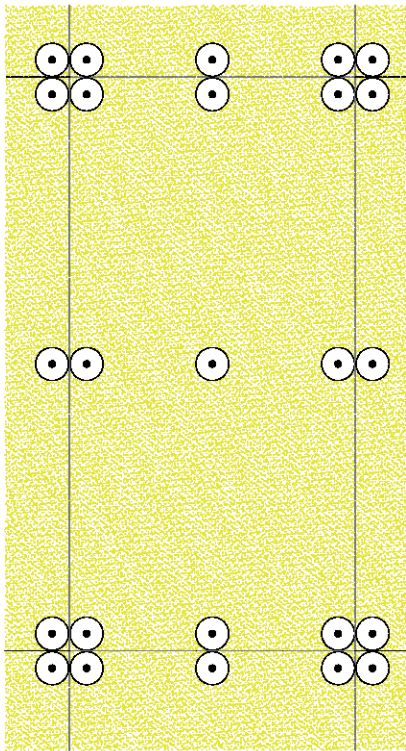
Store undercover, and in dry conditions. Handle with care, especially on the edges and corners, which can be damaged if subject to sharp impact. Do not apply excessive pressure, for example by standing or sitting on the product, as permanent damage may be caused.

ENERGYLITE INSTALLATION METHODOLOGY



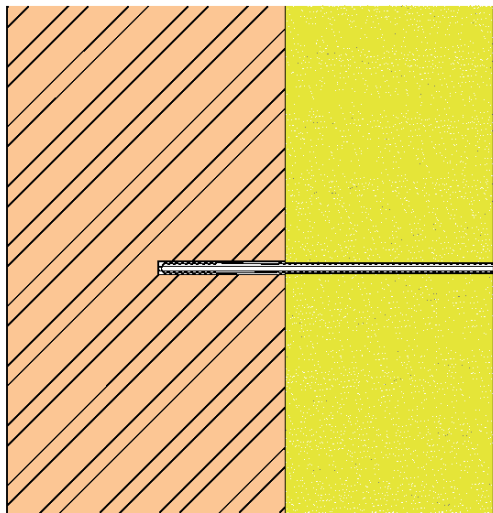
1

- ☒ Place Energylite batt in position.
- ☒ Drill a hole into the masonry wall through the Energylite batt/blanket.



2

- ☒ Install 3 lines of proprietary fixings at 600mm centres with 2 lines 45mm from the edge of the batt and 1 line in the centre of the batt/blanket.



3

- ☒ Fit a proprietary nylon plug onto the masonry wall through the insulation.
- ☒ Secure the batt/blanket using a proprietary screw and insulation disk.