

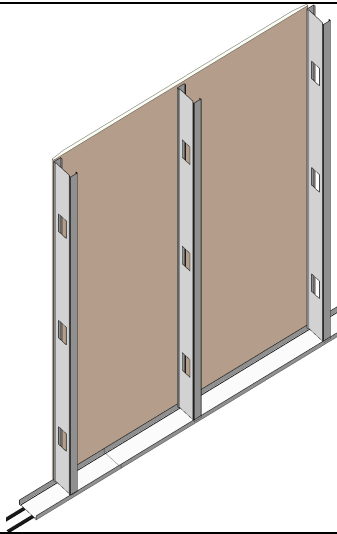
### HANDLING AND STORAGE

Store undercover, and in dry conditions. Store flat. Handle with care, especially on the edges and corners, which can be damaged if subject to sharp impact. Do not apply excessive pressure, for example by standing or sitting on the product, as permanent damage may be caused.

### CAVITYBATT INSTALLATION METHODOLOGY

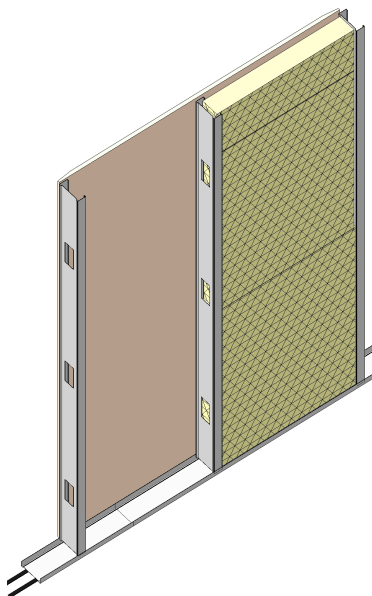
Tools

Sharp Knife



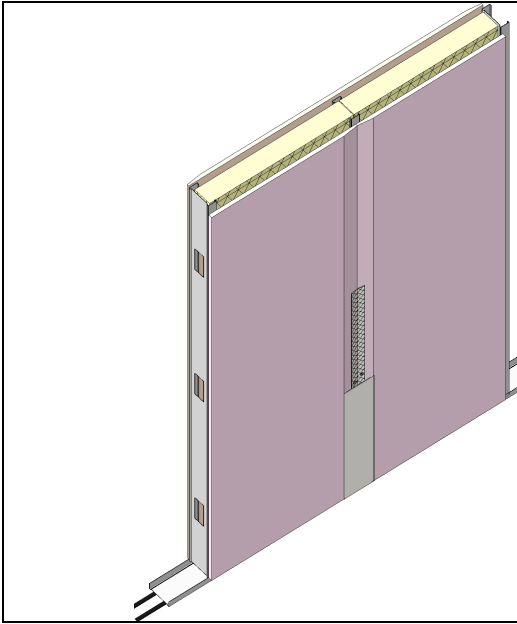
**1**

- Install drywall framework as per manufacture's specification.



**2**

- Install Isover Cavitybatt insulation progressively as boarding proceeds.
- Cavitybatt insulation should be tightly butted together and against the studs.
- Use a sharp knife to slit the cavitybatt to encapsulate pipes.



3

- Clad the remaining side of the drywall.